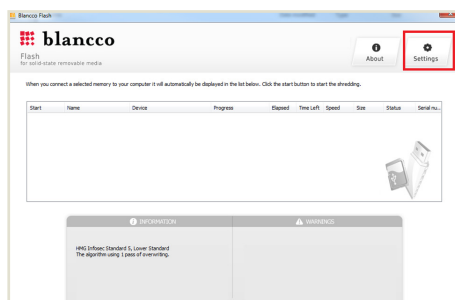


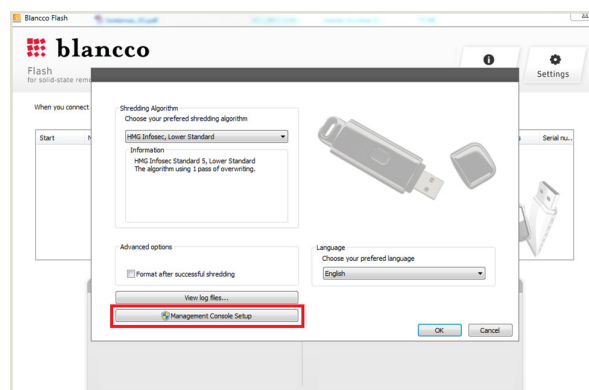
Blancco Flash Settings for Ontrack Hosted Erase

There are few steps that should be taken after program installation before starting the erasures.

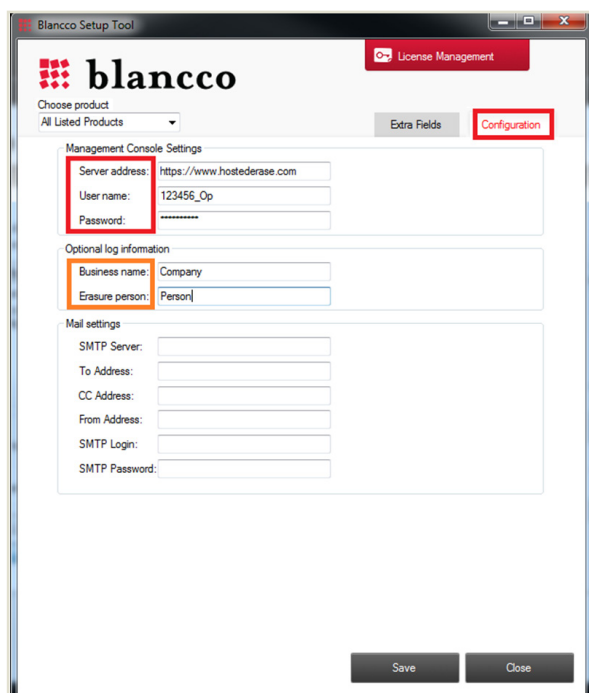
- 1 Start the program, and go to the settings:



- 2 In the settings window click the **Management Console Setup** button



- 3 In the “Blancco Setup Tool” pop-up window choose the **configuration** tab



- 4 **SERVER ADDRESS:** Enter the full Ontrack Hosted Erase url address:

https://www.hostederase.com

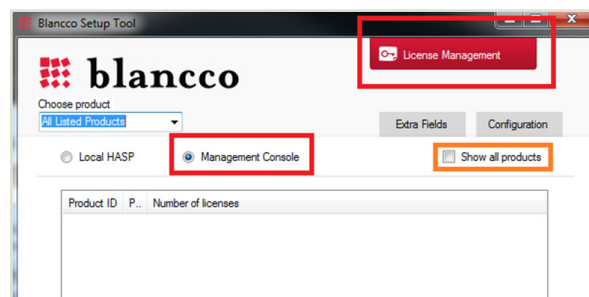
USER NAME AND PASSWORD

Enter the “Erase User” username and password from the account info pdf document. (Due to the complexity of username and password a copy-paste is recommended).

BUSINESS NAME AND ERASURE PERSON (OPTIONAL)

Enter the Company name and Erase Operator’s name if you want those fields to be visible in the erasure report.

- 5 Click the red **License Management** tab in the “Blancco Setup Tool” window (above the “configuration” tab).



- 6 Choose the **Management Console** and click “Close”.

The required settings are now done and you can start erasing the devices. Other settings in the settings window are optional and can be done at user’s discretion.

TIP

To verify the connection settings or license availability, click the **Show all products** and wait for the license information to appear (might take several seconds).

For more information visit us online:

www.ibas.no | www.ibas.se | www.ibas.dk | www.ibas.fi