

## Exchange Search & Restoration Simplified

Ontrack® PowerControls™ is a simple, yet powerful tool for searching, restoring, exporting, and analyzing mailbox items directly from Microsoft® Exchange Server backups, EDB files and Information Store files, or your live Exchange server.

Think about the number of e-mail messages and mailboxes stored in your organization's Exchange server backups. If you needed to find a single e-mail message or mailbox in your backups, how long would it take?

If the very thought of needing to locate and restore messages or mailboxes from your Exchange server backups makes you cringe, Ontrack PowerControls could be the perfect solution.

Working directly with your existing Exchange backup architecture and procedures, Ontrack PowerControls helps you efficiently search, recover and restore message-level items, mailboxes, attachments and other Microsoft® Office Outlook® items from any previous full backup. As IT and Exchange administrators routinely receive requests to find and restore certain messages or mailboxes, not having an efficient way to



meet these requests can lead to a significant strain on your IT resources and frustration from the business stakeholders who make such requests.

Alternative methods of granular Exchange item restoration, such as using single mailbox or "brick-level" backups, are typically very slow and often expensive due to the additional storage space required. Another alternative – restoring a full backup to a recovery server – can take many hours to complete and requires a hardware purchase. And you will still need to search through the backup to find the items you need.

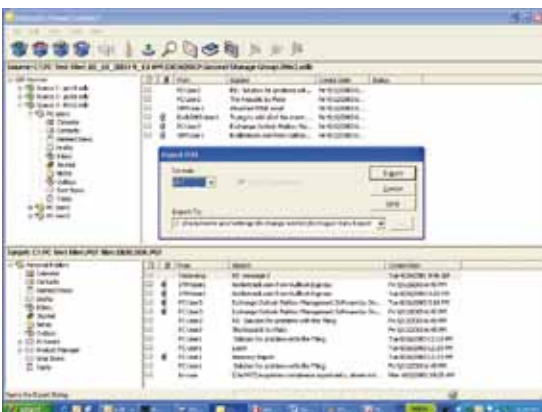
### Save Your IT Resources

Simply put, Ontrack PowerControls dramatically cuts the time and expense normally associated with Exchange item restoration.

- Eliminate the need for brick-level backups or Exchange recovery servers
- Search smarter and faster across multiple sources simultaneously
- Restore items directly to your production Exchange server or any PST file
- Simplify email management tasks such as Exchange migration or mailbox creation

### Search Smarter

Not only is Ontrack PowerControls an invaluable recovery tool, but a powerful searching tool as well. Locating messages, mailboxes and attachments that meet certain criteria can



be achieved much faster with Ontrack PowerControls. Use keywords and other criteria to search across multiple databases simultaneously, locate the items you need and export them back to another location with a simple drag and drop.

Potential uses for Ontrack PowerControls search functionality:

- Meeting regulatory compliance needs for email retention
- Monitoring internal compliance of corporate policies
- Performing in-depth internal or external investigations
- Analyzing Exchange usage over a specific time period

### Simple, Yet Powerful

Ontrack PowerControls offers an easy-to-use interface where you can simply drag and drop mailboxes and messages from source to destination. For larger restoration or export tasks, Ontrack PowerControls features a command line interface allowing you to easily batch repetitive processes such as multiple copy and export without the need to initiate the software. Plus, Ontrack PowerControls allows you to open multiple sources and destinations including EDB and PST files at the same time.

Featuring these and many other usage and security preferences and settings, it's easy to customize Ontrack PowerControls to fit your specific needs.

To use Ontrack PowerControls you will need access to a complete EDB file. To quickly restore a previous EDB from tape, we offer the recommendations below.

Backup Product	Version	Recommendation
Windows® NT Backup	All versions	(1) or (3)
Symantec™ Backup Exec™	All versions	(1) or (3)
Veritas™ NetBackup™	Exchange Server 5.5	(1) or (3)
Veritas™ NetBackup™	Exchange Server 2000 or 2003	(1) or (3)
EMC® NetWorker®	All versions	(1) or (3)
CA ARCserve® Backup	Agent for Exchange with Open File Agent	(1) or (3)
CA ARCserve® Backup	Agent for Exchange	(1) or (3)
IBM® Tivoli® Storage Manager	All versions	(1) or (3)
Hewlett-Packard OpenView® Storage Data Protector	All versions	(1) or (3)
CommVault Galaxy® Backup and Recovery	All versions	(1) or (3)
UltraBac	All versions	(1) or (3)
Other	All versions	(1) if MTF or BKF format (2) or (3) or (4)

- (1) Use Ontrack PowerControls ExtractWizard to restore to an alternate location that is not an Exchange Server, then use Ontrack PowerControls to read the EDB.
- (2) Use backup software to restore to an alternate location that is not an Exchange server, then use Ontrack PowerControls to read the EDB.
- (3) Use backup software to restore to a recovery server (duplicate Exchange Server), then use Ontrack PowerControls to read the EDB.
- (4) If backup software incorporates an Exchange Server volume mirroring technology, then use Ontrack PowerControls to read the offline snapshot of the EDB.

### Ontrack PowerControls System Requirements

To connect and use Ontrack PowerControls software, you need the following hardware and software:

#### One of the following operating systems:

- Windows® XP Professional
- Windows Server® 2003
- Windows Server® 2008 Standard
- Windows Server 2008 Data Center
- Windows Server 2008 Enterprise
- Windows Vista® Business
- Windows Vista Ultimate
- Windows Vista Enterprise

The operating systems listed above are required to have the latest service packs installed. 32-bit and 64-bit versions of the above operating systems are supported.

#### Additional Requirements:

- Microsoft® .NET Framework 3.5
- Intel® Pentium® compatible processor
- Internet Explorer 8
- 1024 MB RAM minimum
- 200 MB of free hard disk space for the installation
- Monitor with 800 x 600 or higher screen resolution
- USB port (for Ontrack PowerControls product licenses requiring HASP key dongle to run application)

**Note:** Ontrack PowerControls supports Microsoft Exchange Server 5.5, Exchange Server 2000, Exchange Server 2003, Exchange Server 2007, and Exchange Server 2007 SP1.

#### The following virtual environments are supported:

- VMware® Server 1.x, v2.x
- VMware® ESX or ESXi
- VMware® Workstation v6.x for Windows
- Microsoft® Virtual Server 2005 R2
- Microsoft® Hyper-V™
- Microsoft® Hyper-V Server 2008
- Microsoft® Virtual PC 2007

Virtual operation of tape devices may have restrictions imposed by virtual operating systems. HASP key operation is validated in environments that support USB attached devices and support the Kroll Ontrack distributed HASP drivers only.



Ibas Danmark ApS  
 Teknikerbyen 25  
 2830 Virum  
 Tlf. 70 22 34 00  
 recovery@ibas.dk  
 www.ibas.dk

Copyright © 2009 Kroll Ontrack Inc.  
 All Rights Reserved.

All other brands and product names are trademarks or registered trademarks of their respective owners.